

*C A M L I N E<sup>®</sup> A D C*

---

Uncovers the truth about your production.



## The next generation automated data collection

CAMLIN<sup>®</sup> ADC machine monitoring system will tell you in depth how your production machines are performing. You can analyze the production system as a whole, see where the weak links are and where there is unused capacity. CAMLIN<sup>®</sup> ADC gives you the keys to improve efficiency!

## Automatic and precise monitoring of the production system

When decisions have to be made about the development of production, the only real basis is to collect data about the actual working of the system. In order to improve efficiency, you need to know what is really going on in production. By analyzing electrical control signals from the machine itself CAMLIN<sup>®</sup> ADC (ADC=Automated Data Collection) automatically collects information about machine working, usage, down-time and about faults that arise, producing reliable and incorruptible data about the machine utilization and condition.

CAMLIN<sup>®</sup> ADC combines traditional, automatic machine monitoring system and manually inserted production phases. It enables extremely detailed production monitoring: with the help of the CAMLIN<sup>®</sup> ADC system, you can address machine time and failures to a certain work piece, tool or NC program, and hence receive valuable information about the manufacturing methods and their development possibilities.

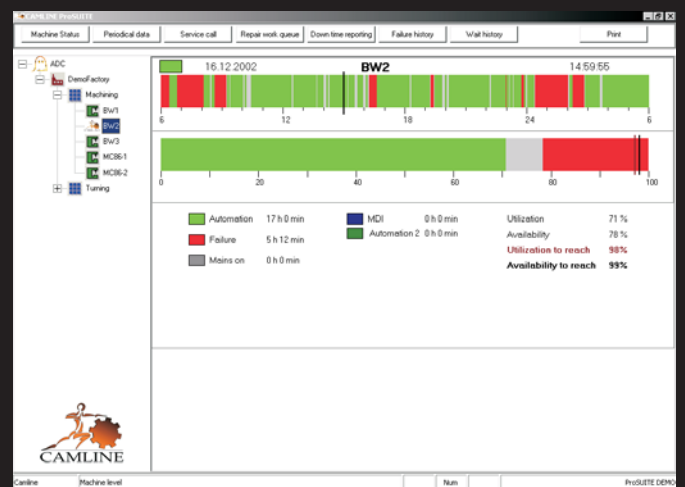
## Why automatically?

In practice, it has been noticed that manual and operator based registering of utilization and failure times does not produce right results: filling paper note books is the first thing that is postponed due to "more important" jobs, and after the first interest the data collection may be stopped completely. Also very short but perhaps frequently occurring failures are almost without exception unnoticed in the manual book keeping, even though the total down time caused by these short failures might be very considerable. Collecting data automatically guarantees that you know exactly how efficiently each machine is working and what sort of condition it is. In addition, data can immediately be used by those who need it.

## See the true influence!

*A reliable and real time data of the capacity utilization can be used in many operations in your company, e.g. maintenance and production planning, manufacturing method development and investment planning. Why acquire new and expensive machines if there is unused capacity in existing ones?*

*With the CAMLIN<sup>®</sup> ADC system you know your own level and how the changes made affect on productivity. When the real effects can immediately be seen, there is no need to guess things anymore.*



*"Machine data" function shows the status of the selected machine within the last 24 hours. Utilization and availability are counted as well.*

NC Program	Automation	Failure	Summary
_N_13886_MPF	0 h 7 min 1%	2 h 5 min 11%	20 h 8 min
_N_G114892_MPF	46 h 0 min 24%	5 h 12 min 3%	188 h 2 min
_N_G11489211_MPF	33 h 14 min 18%	5 h 13 min 3%	187 h 6 min
_N_G1148922_MPF	27 h 5 min 7%	53 h 21 min 14%	391 h 18 min
_N_G1148923_MPF	45 h 16 min 17%	13 h 13 min 5%	273 h 0 min
_N_G1148924_MPF	46 h 11 min 15%	7 h 2 min 2%	318 h 17 min
_N_G114892KOE_MPF	2 h 11 min 33%	0 h 5 min 3%	7 h 9 min
_N_G1167311_MPF	5 h 3 min 5%	0 h 21 min 1%	94 h 13 min
_N_G1167312_MPF	9 h 9 min 8%	0 h 3 min 0%	146 h 4 min
_N_G1167313_MPF	15 h 6 min 8%	0 h 3 min 0%	188 h 17 min
_N_G1167314_MPF	17 h 11 min 47%	1 h 13 min 4%	37 h 3 min

*The CAMLIN<sup>®</sup> ADC system has detailed reporting possibilities. The reports can be created e.g. by machine, by product, by order or by employee.*

# CAMLINER<sup>®</sup> ProSUITE

## - True production integration

CAMLINER<sup>®</sup> ProSUITE system integrates different CAMLINER<sup>®</sup> products into the same Explorer-like user interface. The basic principle in CAMLINER<sup>®</sup> ProSUITE is the hierarchical layout that enables monitoring data by product, machine, cell and factory levels. Different product modules can be integrated to CAMLINER<sup>®</sup> ProSUITE in the order that suits the customer best.

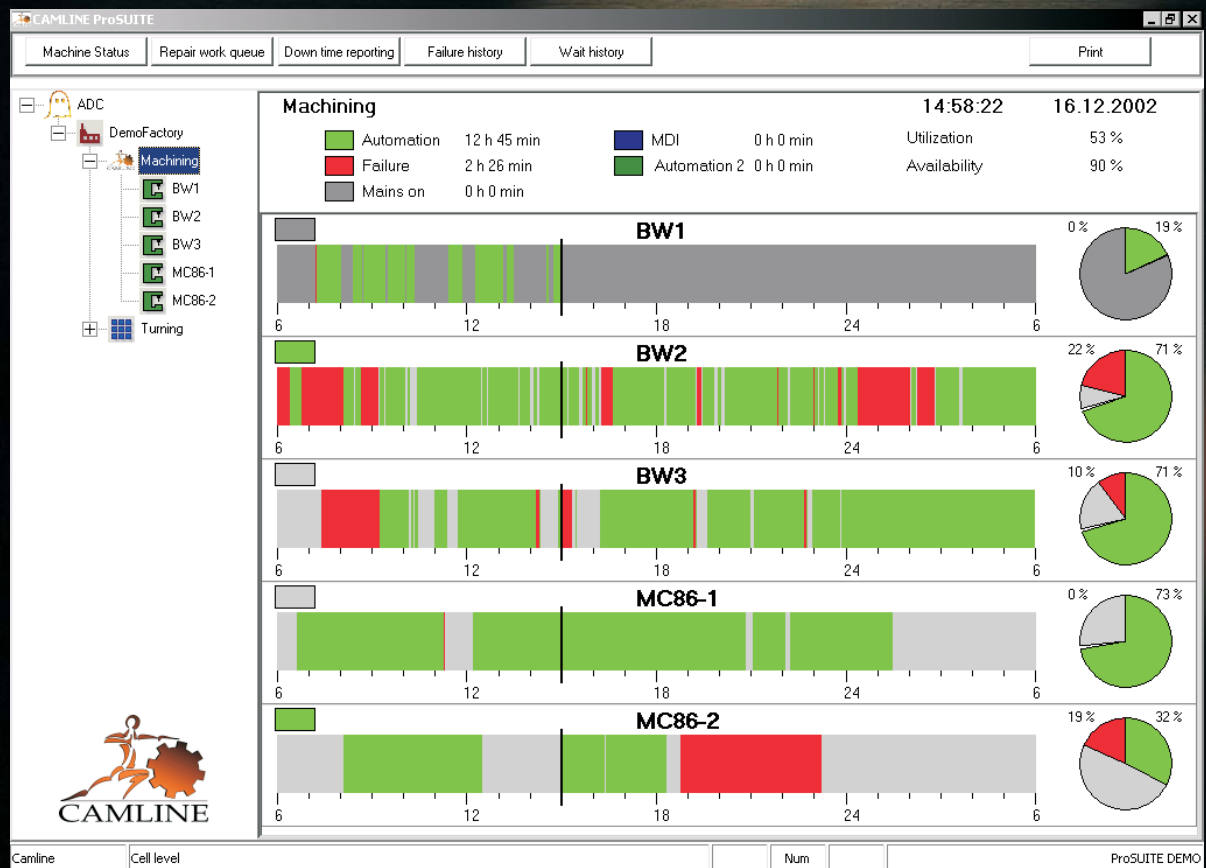
### Unbreakable chain between shop floor and administration

CAMLINER<sup>®</sup> ProSUITE can be connected to enterprise administrative systems. In practice, the connection between the enterprise resource planning system (ERP) and the manufacturing process means the possibility to bring for example cell's or machine's work queue from ERP to the shop floor. Correspondingly, starting and ending of a work piece plus the number of manufactured work pieces can be reported back to ERP. This possibility becomes useful for example when specifying production planning, defining capacities or when deciding about the new investments. Likewise, if production breaks occur, the situation can immediately be seen in company administration and necessary actions can be taken at short notice.

### CAMLINER<sup>®</sup> ADC user interface

The user interface is divided into three sections. There are function buttons on the top, and information section in the middle displays the results of different functions, e.g. machine data of CAMLINER<sup>®</sup> ADC system. Menu tree on the left has the following levels:

1. Software modules e.g. CAMLINER<sup>®</sup> ADC,
2. Factory; i.e. list of factories using the software,
3. Cells; i.e. group of machines in the factory and
4. Machines; i.e. machines in the cell





**CAMLIN**

*Camline Corporation*

*Ainonkatu 35, FIN-53100 Lappeenranta*  
*Tel. +358 5 621 4200, Fax +358 5 621 4242*  
*[www.camline.fi](http://www.camline.fi)*